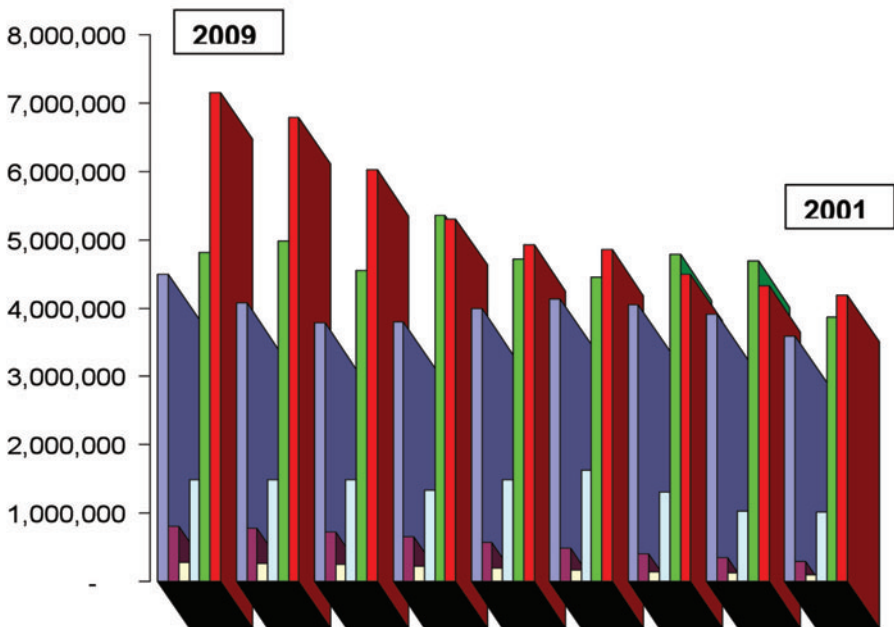


A PUBLIC SERVICE ANNOUNCEMENT FROM THE TAXPAYERS ASSOCIATION OF CAPE MAY

The chart below shows the growth of tax revenues for each of our six taxing entities

Cape May Tax Dollars 2001 - 2009

Source: Cape May City News 2001 - 2009



Notice in particular the RED column shows the inflation of taxes for our city government. These taxes just for our city government have risen 71% since 2001. In that same time period, the county has gone up 25%, the regional school 24% and the elementary school 46%. In 2001 city government taxes were 32% of our tax bill –today they are 38%. Anyone see a trend here?

Now more than ever, it's time to look at NEW sources of Revenue to fund city services; coupled with Savings Initiatives.